

Your Camping Permit in Castle Parks

Thousands of Albertans camp in the Castle every summer.

All campers must have a valid permit. A permit ensures staff and emergency responders know where you are in the event of an emergency such as: fire, flood or injury.

Permits are needed before you arrive, and can be obtained at albertaparks.ca/castle, self-serve kiosks or retailers.

About Your Camping Permit

Camping permits provide visitors:

- Up to 16 days camping;
- Access to hundreds of kilometres of wilderness camping; and
- Access to camping infrastructure such as fire pits, garbage containers and toilet facilities in some areas.

The following permit conditions apply to camping in camping areas (1-9) in Castle Provincial Park in 2017:

- Camping must be within areas as identified on maps and/or within marked areas;
- Camping units must be positioned at least 15 m away from the traveled portion of a maintained roadway, but not more than 200 m from the roadway unless otherwise posted on site;
- Only valid permit holders may drive vehicles off of the highway to access their registered campsite;
- Clearing of vegetation is not permitted;
- Camping areas must be grassed or previously disturbed; new disturbance is not permitted;
- Sensitive areas may be specifically excluded, as marked, within the designated camping areas;
- Wood may not be cut within designated camping areas; and
- OHVs are permitted on signed and designated trails.

Keeping the Castle Wild

The Castle area is an important refuge and movement corridor for wildlife, including grizzly and black bears, wolverines, wolves, cougars, moose and elk.

- Remove all garbage for disposal at home or at an approved garbage disposal facility.
- Do not dump grey water.
- Driving in natural waterbodies such as streams and rivers is against the law, use designated water crossings.
- Keep your dog on a leash, no more than 2 m in length, at all times.
- Carry bear spray and know how to use it.

Keeping the Castle Safe

Last year, Alberta had 1,338 wildfires, which burnt approximately 611,000 hectares. More than 60 per cent of wildfires are human-caused.

- Fires only allowed in designated fire pits or facilities.
- Do not bring firewood from other provinces.
- Firewood is available from nearby retailers, or periodically at established campgrounds from roving attendants.
- Personal wood collection requires a valid permit that can be obtained from Alberta Parks or other AEP offices.
- Campfire bans and/or travel restrictions may be put in place when the fire hazard is extreme.

Before your visit, please check albertaparks.ca/castle, www.albertafirebans.ca and Albertaparks.ca/advisories for more information and current notices.

Public Safety, Enforcement, Other Urgent Issues
Phone: 1-844-HELP-PRK (1-844-4357-775)

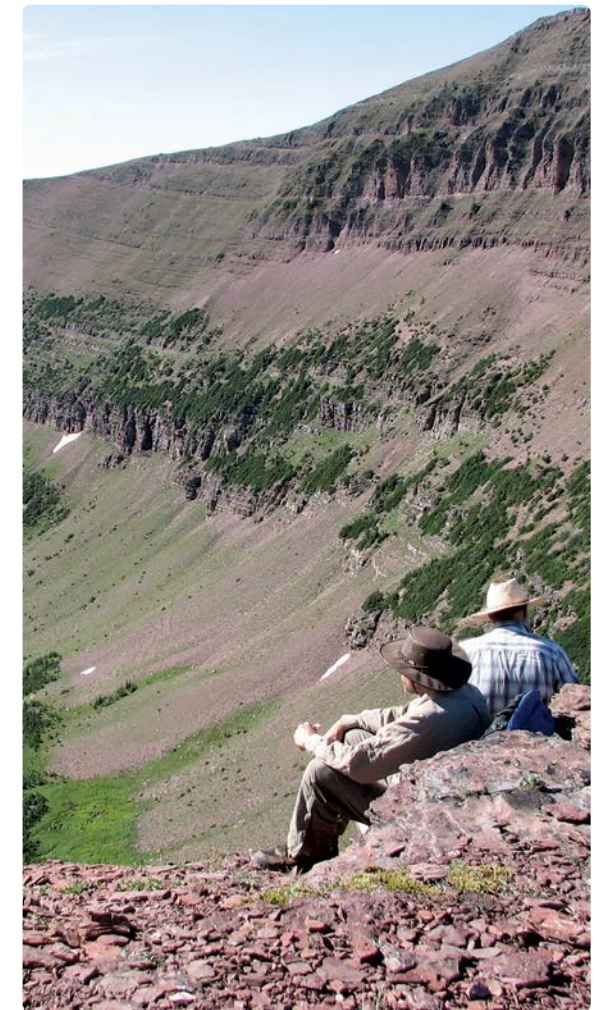


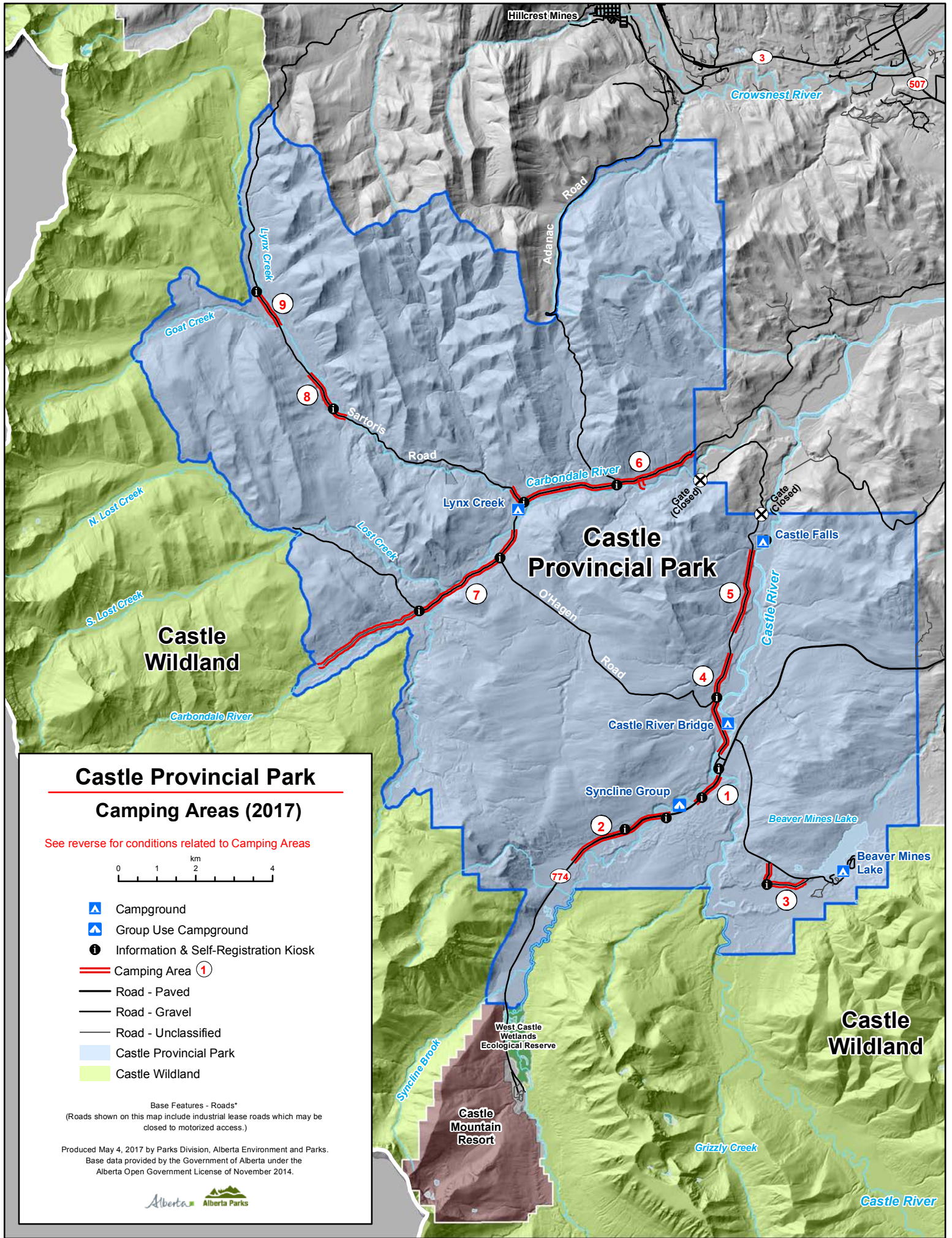
Printed May 2017



Castle Camping

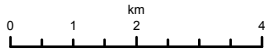
Castle Provincial Park





Castle Provincial Park Camping Areas (2017)

See reverse for conditions related to Camping Areas



- Campground
- Group Use Campground
- Information & Self-Registration Kiosk
- Camping Area ①
- Road - Paved
- Road - Gravel
- Road - Unclassified
- Castle Provincial Park
- Castle Wildland

Base Features - Roads*
(Roads shown on this map include industrial lease roads which may be closed to motorized access.)

Produced May 4, 2017 by Parks Division, Alberta Environment and Parks.
Base data provided by the Government of Alberta under the
Alberta Open Government License of November 2014.